

### Community Watch

A few neighborhoods have been successful in creating a community watch. If you are interested in organizing a group in your neighborhood, contact the HCOA office and we will assist you in making the right connections with HPD and the Community Watch Association.

Be a good neighbor watch out for each other.

### The Use of Common Ground

The use of common ground in Hampton Cove is open to all residents. This includes the lakes inside Hampton Cove and along the greenway near the schools. All these areas are accessible from the streets or in some cases the greenway.

The two lakes that surround Cobblestone Cove and the lakes on the East side of the bypass before reaching Flint Mill are not in Hampton Cove and are on private property. Anyone can be asked to leave these area by the property owner or the game warden in the area. The game warden also addresses fishing in Hampton Cove lakes and in the private lakes previously mentioned.

A map including most of Hampton Cove lakes is available on the website at [www.hamptoncove.com](http://www.hamptoncove.com).

If you suspect unauthorized fishing call 1-800-271-4263.

**The HCOA Board of Directors meets the fourth Monday of each month. Please notify the office if you plan to attend.**

### HCOA Office

*is located in Suite F of the Hampton Town Centre at 180 Old Highway 431. This is the complex behind Publix. Look for HCOA in large green letters.*

*Phone: 256-533-6005*

*For email addresses, resident forms, community-wide standards, the covenant and other documents, log on to [www.hamptoncove.com](http://www.hamptoncove.com)*

## Flood Map Deadline Sept. 5



Residents throughout Hampton Cove continue to be very interested in FEMA's redrawing of the Flood Insurance Rate Map (FIRM). The preliminary new map places almost 600 Hampton Cove homes in the flood zone and would require those homeowners to obtain flood insurance at a significantly higher rate. Such a large number of homes in the flood zone could also have a negative impact on home values throughout our community.

The volunteers on the Hampton Cove FIRM Response Team are committed to identifying errors in the new map before it becomes effective in order to remove as many homes as possible from the final map. The Team has received broad support from all of the directly impacted neighborhoods and hired an engineering firm to support their efforts. The Team has discovered three significant errors by state contractors that drew the preliminary map: they did not use the most accurate topographical data available for the Flint River, the

peak flow rate in Peevey Creek is substantially lower than their study indicated, and they incorrectly plotted the floodway along Peevey Creek. These three errors bode well for the Team's mission and will be the basis for our protest and appeal.

The 90-day comment period began June 5th, 2011 and ends September 5, 2011. The Team will submit its appeal and protest during that 90day window. After the comment period has ended and all comments/appeals have been addressed, the state will begin preparing the final FIRM. The new flood map will become effective approximately six months later (March 2012).

Visit the Hampton Cove FIRM Response Team website ([www.hcfrt.org](http://www.hcfrt.org)) to learn more about this issue. You may also email questions to [info@hcfrt.org](mailto:info@hcfrt.org). It is still possible to join the team effort, but contributions must be received by September 5th.

*The Waterfall won a Huntsville Beautification Award Again in 2011 Thanks to Joe and Ronnie for keeping all our planted areas beautiful.*

*July/August 2011*

# The Latest on the Waterfall?

Hampton Cove's signature landmark and one of the most photographed sites in the North Alabama area is about to experience another surgery. Past projects have almost solved the water loss problem. The upcoming procedure is taking place in July 2011.



This phase will involve the excavation of the exit side of the waterfall and will involve a larger area than was repaired previously. The area that will be excavated and sealed runs from approximately the bench down to the golf cart crossing.

Residents will see heavy equipment, trucks, and personnel in the area on a daily basis for several weeks. The HCOA will also be erecting some warning signs at the top of the exit to remind drivers to slow down and use the right side of the road. Please be aware of the orange safety markers as you top the hill and the signs that say "Workers Ahead".

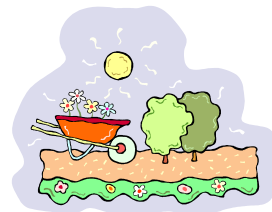
If you can use an alternate route to exit the community during July, it would be very helpful.

Due to many years of service, the Waterfall has required mechanical and structural repairs. This is part of an ongoing program to monitor the operation of our star amenity and improve its operation and water tightness.

## Garden Club

**The Garden Club meets from September through May each year through awards yard of the Month and organize the luminary event in December.**

- YARD OF MONTH: June-Peter and Susan Baldaia, 2738 Deford Mill Road  
 June-Susan and Eddie Baldwin, 3006 Willow Trace  
 June-Betty and Lowell Zoller, 3027 Flint Mill Run  
 July-Harry and Barbara Stokes, 2525 Cranfield Road  
 July-Paula and Louis Consagra, 3200 Penninsula Circle  
 July-Sean and Julie Goark, 2726 Muir Woods Drive  
 July-Robert and Jennie Dewitt, 3011 Flint Mill Run



## Art Festival:

Reflectives Frame & Art Gallery at 220 Old Highway 431S in Hampton Cove is sponsoring the second in a series of art festivals every 2<sup>nd</sup> Saturday through August 2011.

Admission is free, barbeque plates are available to benefit The CARE Center for a small donation of \$7.50.

Applications for artisans are available on the website. Visit [www.ArtisansCove.com](http://www.ArtisansCove.com), email ChristinaWegman@aol.com, or call 256-509-2004.

## A Benefit for the Russel Hill cancer Foundation:

Wine and White Linen, Saturday August 27th, 2011 at the Clearview Cancer Institute.

Tickets are \$75.00 and can be purchased at [www.russelhill.com](http://www.russelhill.com).

## The Care Center

### Future events to support the Care Center

- July 16 Band2gether Concert at Rivertree Church
- August 13 Artisian's Cove Chicken Dinners
- Sept. 1 Care Center Holiday Shop
- Sept. 17 iRace Because iCare
- Oct. 17 iGolf Because iCare Tournament

See The Care Center's website for more information  
[www.thecarecenter.us](http://www.thecarecenter.us)

## Covenant Corner

### Article VI, Section 10: Architectural Standards

"No exterior construction, alteration, addition, or erection of any nature whatsoever shall be commenced or placed upon any part of the Community, except such as is installed by the Declarant, or as is approved in accordance with this Section, or as is otherwise expressly permitted herein. No exterior construction, addition erection, or alteration shall be made unless and until plans and specifications showing at least the nature, kind, shape, height, materials, and location shall have been submitted in writing to and approved by an Architectural Review Committee established by the Board. The following items, without limitation, will be submitted to the Architectural Control Committee for new home construction: house plans, site plans, landscaping plans, and exterior color and material changes." *page 13 in the online document*

## Community Wide Standard Update

The HCOA Board has voted a change in the Community Wide Standards. Community Wide Standards are called for by the covenant and can be updated from time to time.

In the June meeting the HCOA Board voted to change the community wide standard to allow mulch that has been dyed and also the use of pine straw.

Natural bark mulch creates a classic appearance and the overall style of Hampton Cove is classic. Please check the website for other Community Wide Standards and Frequently asked questions. A copy of the complete covenants is available at [www.hamptoncove.com](http://www.hamptoncove.com).

## Grass Changes in Common Ground

The HCOA board is making an effort to improve many areas of the neighborhood. Two projects that are currently underway are the turf work at the lake end of Kincade in Tamerack Lakes and the park area in Arbor Woods.

Both areas have been irrigated, power raked and seeded with Bermuda. These areas are large pieces of common ground. This is a test process to consider changing to Bermuda in our common ground. Bermuda is a more hardy grass for our climate and less costly to maintain. Help us by walking on the sidewalks in this area and allowing the new grass to become well established.